

Weddings
at



The Olde Bell



Welcome to The Olde Bell and congratulations on your engagement



Sitting in the quaint village of Hurley, Berkshire, The Olde Bell is a stunning Grade I listed coaching inn steeped in history. We opened our doors back in 1135 AD and for hundreds of years, the ringing of the Sanctus Bell signalled that an important visitor had arrived in the village. That same bell still hangs over the door of The Olde Bell, a sign of welcome and refreshment to travellers.

From the rustic charm of a barn wedding, to the more classic tone of a ceremony held within the exclusive Malt House – couples will be given the freedom to create the wedding of their dreams with the backdrop of an unforgettable location. Whether it's a grand ceremony or intimate affair, The Olde Bell has a variety of packages and options to suit.

With an experienced team to guide you through the whole process, you are guaranteed a warm and personal service designed to make your day run perfectly.

So become a page in our history book and celebrate at The Olde Bell.

The Tithe Barn

Across the lane from The Main Inn is The Tithe Barn, a 16th Century Tudor Barn with exposed beams, high ceilings, its own bar area and private courtyard.

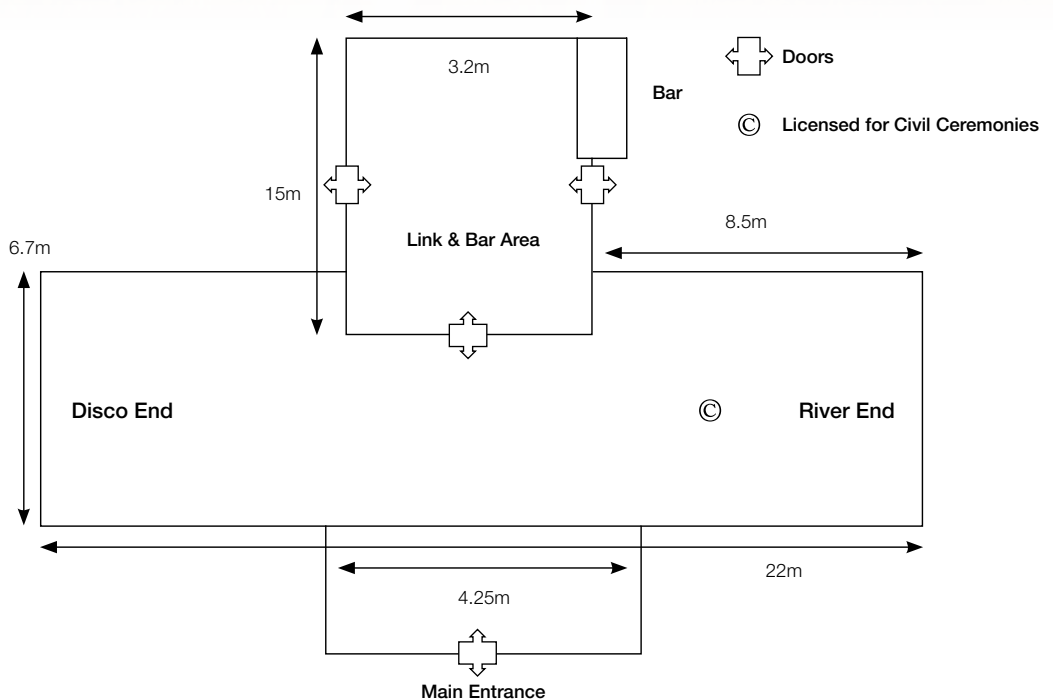
The Tithe Barn is the largest space at The Olde Bell and is perfect for your wedding ceremony and reception. The Tithe Barn has 5 bedrooms accessible from its courtyard and further rooms can be utilised nearby in The Bell Lodge, The Brick Barn or The Main Inn.

The Tithe Barn can accommodate up to 130 guests for your ceremony and wedding breakfast and up to 180 guests for your evening reception.

Its grandeur and elegance will allow you and your guests to enjoy your special day in a magnificent setting.

Room Layouts

	Height metres	Floor metres
The Tithe Barn	3.9 - 5.9	6.7 x 22



The Malt House

Once the private residence of the previous owner, The Malt House is a detached Victorian building located next door to The Main Inn with its own walled garden, private entrance and tennis court. The Malthouse offers 5 uniquely styled function rooms showcasing The Olde Bell's distinctive elegance. When hired, you will have access to the entire house, gardens, 14 bedrooms plus a private bar and personal service team.

The Drawing Room is a long room, running the width of the building with its own bar at one end and a door leading onto the walled garden at the other.

The Music Room has high ceilings, a large fireplace and a grand piano in the big bay window which opens out onto the gardens, beautiful with a celebration drink in hand.

The Garden Room has French doors on two sides, leading out onto the private garden. The room has high ceilings and an impressive fireplace.

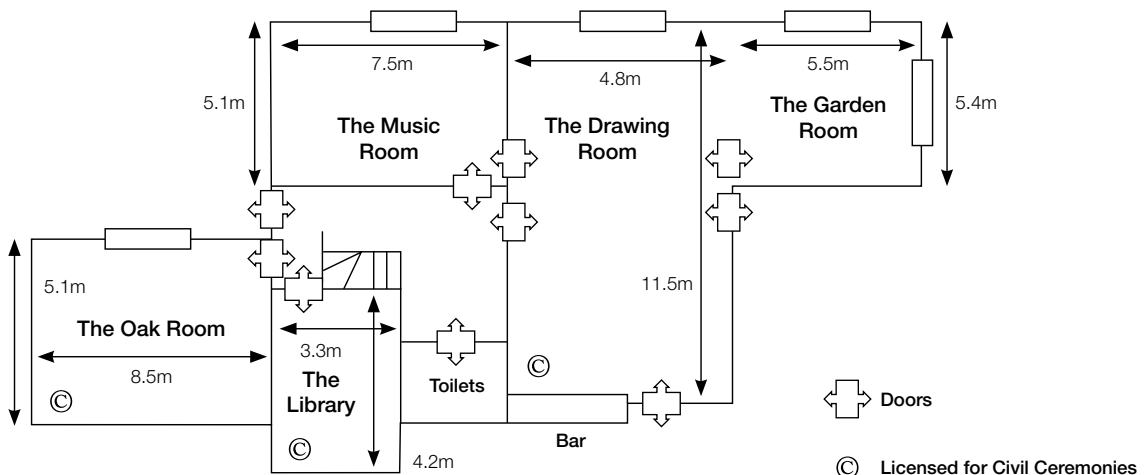
The Oak Room is a oak panelled room with a large working fireplace and windows on three sides. The perfect space for your ceremony.

The Library is a small intimate space mirroring the oak panelling of next door and a hand painted cocktail cabinet.

The Malt House can accommodate up to 60 guests for your ceremony and wedding breakfast and 120 guests for your evening reception.

Room Layouts

	Height metres	Floor metres
The Garden Room in The Malthouse	3.0	5.5 x 5.4
The Music Room in The Malthouse	3.0	7.5 x 5.1
The Drawing Room in The Malthouse	2.2	11.5 x 4.8
The Library in The Malthouse	2.2 - 3.0	3.3 x 4.2
The Oak Room in The Malthouse	3.6	8.5 x 5.1











Bedrooms

Arranged over 5 buildings, guests will be treated to a wide range of choice when it comes to accommodation. We have 4 grades of rooms which range from the sublime to the ridiculously sublime, all of which provide honest home comforts.

The Main Inn & The Malt House

These two beautiful buildings dating back from 1135 are brimming with charm and character and house our Luxury and Superior grade rooms.

The Brick Barn

Our spacious barn holds our Deluxe grade rooms.

The Tithe Barn

Located in a ground floor building behind The Tithe Barn, our Classic grade bedrooms open directly onto a small courtyard.

The Bell Lodge

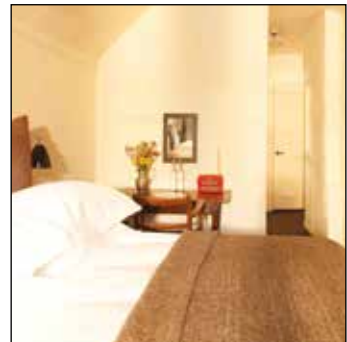
This fantastic one-story building opposite The Main Inn, houses more of our Classic grade rooms.

Accessibility

The Olde Bell in parts dates back to 1135 with some tricky access points. That said, we welcome absolutely everybody and do our utmost to work around the limitations of the old building in order to be accessible for all. We have a bedroom located on the ground floor in The Brick Barn and it has an enabling bathroom. There are also accessible toilets on the ground floors in both The Malt House and The Tithe Barn.

Dogs

We welcome dogs at The Olde Bell so don't forget to pack your pooch so they can enjoy the celebrations too.





The Important Bits

Please see a little guide of what happens next. Remember it's just a guide, if you have any further questions or would like to arrange a catch up at any time, please let us know.

Securing Your Booking: One of our beautiful spaces can be provisionally held for a maximum of two weeks without payment. After this point we require a 10% deposit based on the estimated total cost of your wedding (unless otherwise stated) & a signed copy of our terms & conditions. Until these are both received the booking will not be confirmed.

Civil Ceremony: It is the responsibility of the wedding party to book & pay for the registrar that conducts any civil ceremony on site. For client's booking their wedding less than a year in advance, we recommend checking the registrar is available to marry you on your chosen date before confirming your booking with The Olde Bell. Clients who have booked their wedding more than a year in advance of their date cannot book their ceremony with the registrar any earlier than twelve months before their wedding – once you get to twelve months before your wedding we recommend contacting the registrar as soon as possible.

All civil ceremonies at The Olde Bell must be conducted by the Windsor and Maidenhead Registry Office – 01628 796422.

Church Ceremony: If you are choosing to marry at a local church we recommend checking the church is available to marry you on your chosen wedding date before confirming your booking with The Olde Bell.

Blessings/Celebrants: It is the responsibility of the client to arrange, book and pay for celebrants or alternative blessing ceremonies that are to be held here at The Olde Bell.

Bedrooms: If you require use of our Tithe Barn for your evening reception you will be contracted to five classic Tithe Barn bedrooms. If you require the use of our Malthouse for your evening reception you will then be contracted to 14 Malthouse bedrooms (6 classic bedrooms, 3 superior bedrooms and 5 luxury bedrooms).

Accommodation requires full pre-payment at time of booking to secure the wedding rate. If you are holding bedrooms, they must be allocated no later than six weeks before your wedding; if this is not done you could be liable for full cancellation fees.

Exclusivity: Please note that we do not offer exclusive hire of the whole property. Our main bar, Summer kitchen and restaurant spaces are public areas and there may be members of the public in these areas whilst there is a wedding taking place. Please also be aware that if you do not book both The Malthouse and The Tithe Barn then we have the right to hire the space you have not booked out to another event.

Menu Tasting: Three months before your wedding takes place we will invite you to come into our restaurant to sample two starters, two main courses & two desserts from your chosen wedding package; to aid you in deciding the final menu options for your wedding breakfast. At the menu tasting you will also have the opportunity to try the wine that is included in the package. Menu tastings do not apply to afternoon tea, buffet or BBQ menus.

Wedding Plans: After your menu tasting is complete your wedding co-ordinator will work with you to put together an itinerary for your wedding day. At this stage we do not require final numbers or menus but a rough idea of what you require from the venue will be useful.

DJ/Band: If you opt not to use the venue's in-house DJ you must ensure that any band/DJ/musician you have arranged provides us with copies of their public liability insurance & PAT testing certificates before they perform at the venue. This rule also applies to any other supplier providing electrical equipment for your event.

Please be aware that due to being in a residential area The Tithe Barn has a sound limiter so we recommend that any band or DJ that has not worked in The Tithe Barn previously completes a sound check prior to performing.

Suppliers: We recommend supplying the venue with contact details & arrival times of any suppliers you have arranged to come on site i.e florists, balloon companies etc. That way if any issues arise on the day we can contact external suppliers on your behalf.

Final Confirmation: Four weeks before your wedding is due to take place your wedding co-ordinator will invite you in again to run through the final details of your wedding including room set-up, final numbers, dietary requirements etc. At this stage we will also request final payment for your booking.

Final Function Sheet: After your final meeting your wedding co-ordinator will email over to you a final function sheet and floor plan for your wedding day. It is essential that you read through this information carefully and point out anything you are unsure of as this final sheet is what our operations team will use to run your event.

Access Times: All wedding clients & their suppliers will have access to their function rooms no later than 9am on the day of their wedding. If your function suite is not in use the day prior to your wedding you may be able to access your suite the day before (depending on when our team are available to set the room). Your wedding co-ordinator will be able to confirm access times in your final wedding meeting (please be aware access times could change up to a couple of days before your wedding should we get a last minute booking prior to the start of your event).

Decorations: The client or florist is expected to set-up all decorations including table decorations, place cards and favours; bigger more intricate items like centre pieces, sweet trolleys or bunting are also the responsibility of the client or supplier. All items must be removed by 9am the next day and will not be stored on site. The client/suppliers will be responsible for any damage caused by items used for their wedding and may be liable for repair costs.

Candles: Candles are permitted at the venue as long as they are in an appropriate heat resistant holder.

Firepits: Firepits are not permitted in any venue at The Olde Bell.

Inflatables: Inflatables of any kind are not permitted.

Point of Contact: On the day of your wedding you will be allocated a duty manager who will look after you through the duration of your event. If there are any changes we should be aware of on the day or if you have any concerns during the day please speak with the duty manager allocated to your party. We also recommend appointing a point of contact within your party (other than the bride & groom) so we have someone to speak to should any concerns arise when the bride/groom are busy doing other wedding tasks.

Finish Times: We are bound by the local councils license for live music and recorded music. Please ask us for timings. Extensions to the licence (through the local council) are possible but not guaranteed. A small fee will be charged.

You must advise your wedding co-ordinator of your intended finish time in your final wedding meeting so we can staff your event accordingly (this agreed finish time cannot be altered on the day of your event).

Directions



From the M4 Leave the M4 at junction 8/9 and follow signs for A404. Leave the dual carriageway at the third exit for Henley-on-Thames A4130. Follow instructions 'From Burchett's Green'.

From the M40 Leave the M40 at junction 4 and proceed onto the A404 towards Maidenhead. From the dual carriageway take the exit Hurley / Henley-on-Thames A4310. Follow instructions 'From Burchett's Green'.

From Burchett's Green At the roundabout (Burchett's Green) go straight over towards Hurley and Henley-on-Thames. Pass the Temple Golf Club on your right and continue down the hill. At the bottom turn right into Hurley Village, The Olde Bell is half a mile down the High Street on the right, the car park is opposite.

By Train 40 minutes from London Paddington to Maidenhead.

Our thanks to the following for their beautiful photos

Ali & Carl

Anneli Marinovich www.annelimarinovich.com

Gabrielle McMillan www.gabriellemcmillan.com

Jamie Tempest www.jamietempest.myportfolio.com

Red Fox Henley www.redfoxhenley.co.uk

Source Images www.sourceimages.co.uk

Oakwood Events www.oakwoodevents.co.uk

For more information about recommended suppliers, please visit our website.





The Olde Bell

THE OLDE BELL

HIGH STREET, HURLEY, BERKSHIRE SL6 5LX

TEL: +44(0)1628 825 881 | WWW.THEOLDEBELL.CO.UK

EMAIL: WEDDINGS@COACHINGINN.CO.UK



Like us on facebook



Follow us on Twitter



Follow us on Instagram